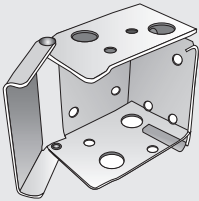


# How to fit and operate your Wooden Venetian blind

## You should have...

First check you've got all the fittings that come with your Wooden Venetian blind

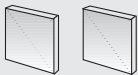
End brackets: 1 pair



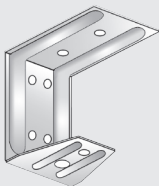
Matching fascia



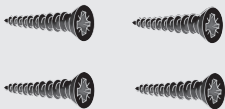
Matching end returns (if blind is to be fitted outside the window recess)



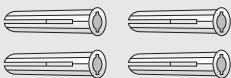
Centre support bracket (if length requires)



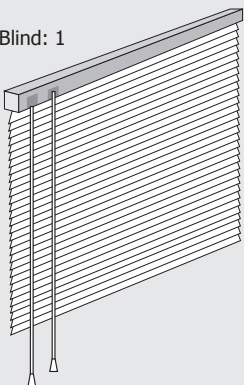
Screws: min 4



Rawl plugs: min 4



Blind: 1



## Fitting your Wooden Venetian blind

### Before you start, check you have your brackets

Your blind brackets are packed separately at the end of the box. Check you've taken them out before you throw the packaging away.

You can fit your MyBlinds Wooden Venetian blind in 2 straightforward stages. Just do these in order and you'll soon have your new blind up.

1. Fit the headrail
2. Attach the blind

## Stage 1: Fit the headrail

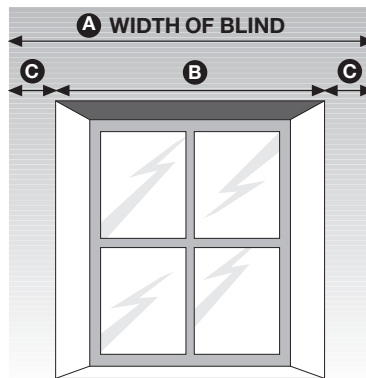
### 1 Fitting your blind outside the window (exact fitting)

To make sure the centre of the rail is precisely in the middle of your window, the measurements at either end (**C**) need to be the same. To work out **C**:

- measure the width of the window (measurement **B**). Write down the measurement.
- measure the width of the blind (measurement **A**). Write down the measurement.

Take measurement **B** away from measurement **A** and divide the answer by 2 to get measurement **C**.

Now follow the instructions for **face fixing**.



■ TOP FIX ■ FACE FIX

### Fitting your blind inside the window (recess fitting)

You need to decide whether to **face fix** or **top fix** your blind.

**Top fix** your blind to the lintel if:

- you have uPVC window frames, or
- there are obstructions like handles

**Face fix** your blind if:

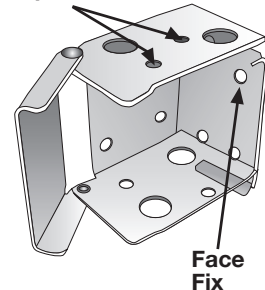
- you want to fit the bracket to the window frame

### 2 Extend the door hinge on each bracket as far as it will go.

Brackets can be used on either the left or right, and the door is hinged on the side.

Put the bracket in place and mark 2 holes according to the type of fixing you've chosen (see step 1).

Top Fix



## Stage 2: Attach the blind

### 1 Once you've fitted the brackets take the plastic end caps off the blind headrail. Slide the blind into the brackets, with the Velcro patches facing towards you.



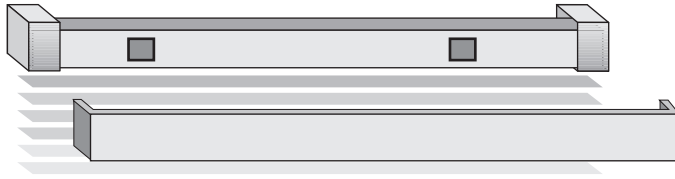
### 2 To lock the headrail into position, push down and snap shut the hinge doors.



## Stage 2: Attach the blind (continued)

3

Take the thin plastic backing off the Velcro patches. Position the fascia on the front and press firmly to make it stick. If your blind has wooden returns (these are fascias that sit at the side of the blind and only come with blinds to be hung outside the window) they will fit automatically into place at the ends of the headrail.



4

To raise and lower the blind, use the cord on the left hand side. To lock the blind into position, pull the cord to one side. Use the other cord to angle the slats.



### Operating your blind

**Operating your blind is easy. Just follow these instructions.**

- One cord controls the height of the Wooden Venetian blind, the other controls the angle of the slats.
- To raise the blind, pull the cord down until the blind is at the height you want
- To lower the blind, release the cord lock by pulling the cord across the front of the blind and let the cord slide through your fingers.
- Slats should be open when raising or lowering the blind.

### Be safe

- Keep all cords and chains out of children's reach.
- Install safety devices such as cleats and cord tidies to keep cords away from children. You can request a **free safety device** when you make your MyBlinds order.
- Move cots, beds and other furniture away from blinds